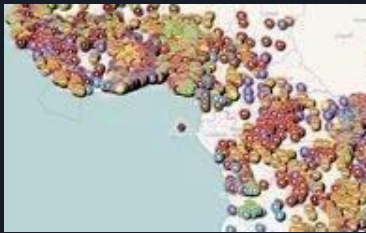


# AidData

Open Data for International Development



**Data, tools and research to target, coordinate, and evaluate aid more effectively**



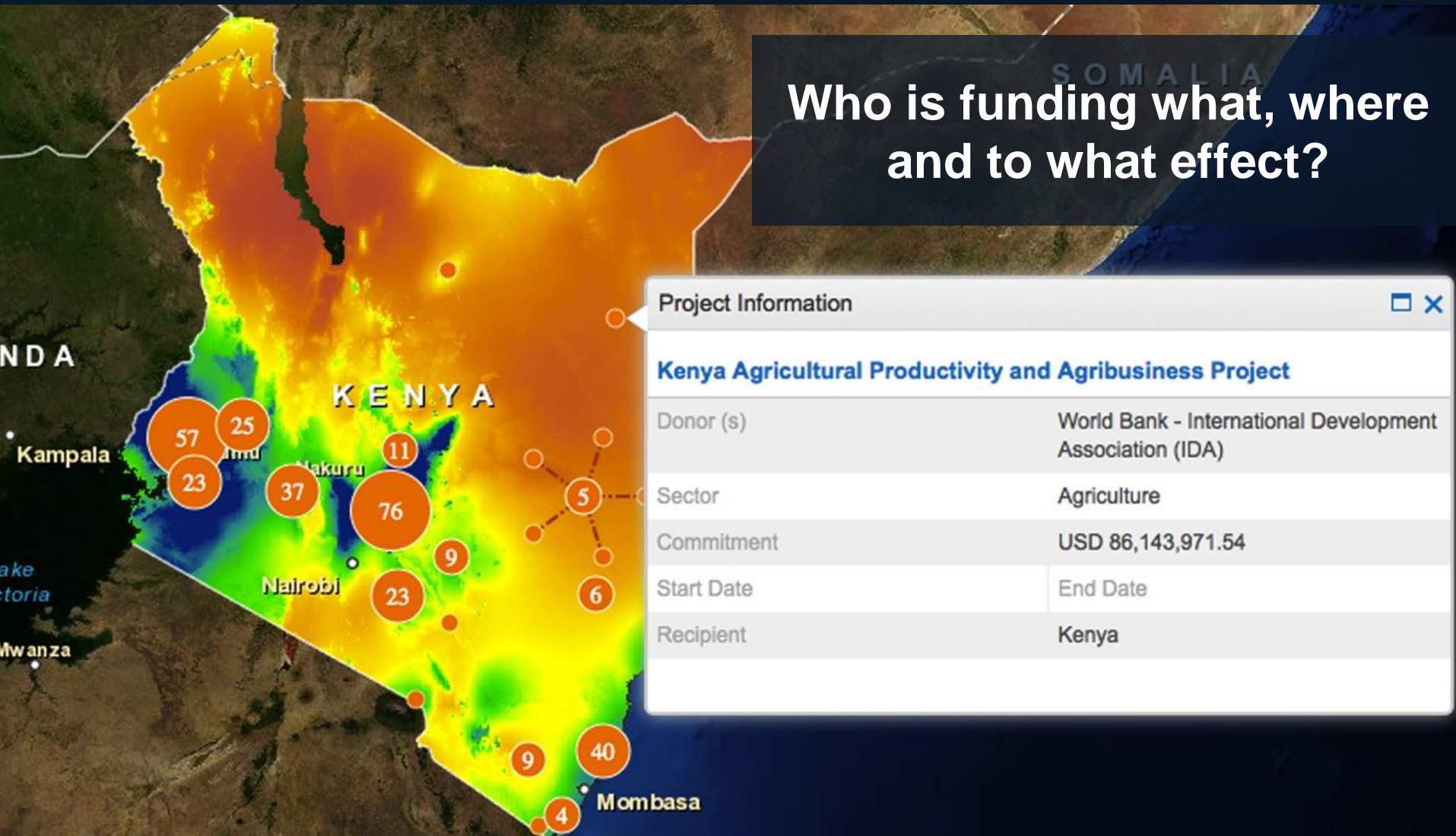
*AidData is a research  
and innovation lab  
making development  
finance information  
accessible and  
actionable.*







# Who is funding what, where and to what effect?

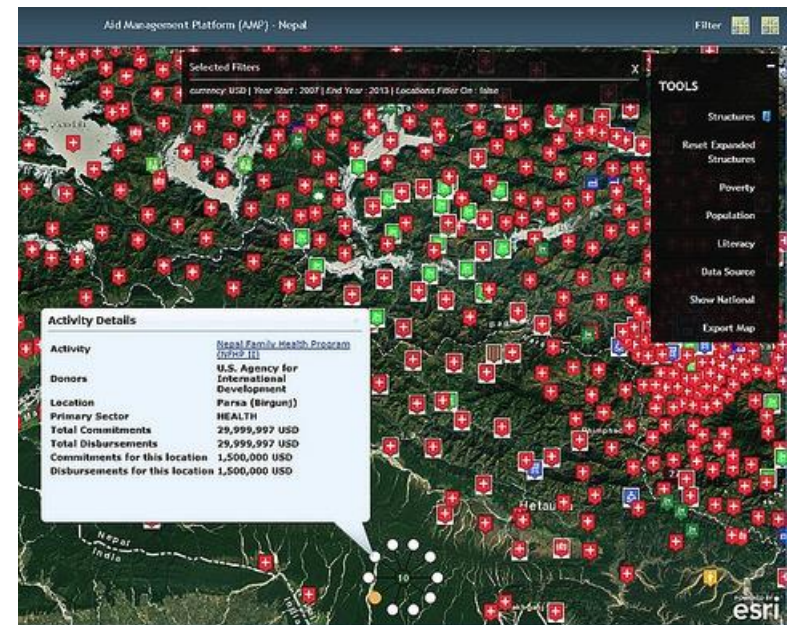




U.S. GLOBAL  
DEVELOPMENT  
**LAB** Powered by **USAID**



1. Building a supply of high-quality geocoded aid information
2. Working with stakeholders to make **meaning** and **impact** out of data



WILLIAM  
& MARY

BYU



THE UNIVERSITY OF  
TEXAS  
AT AUSTIN



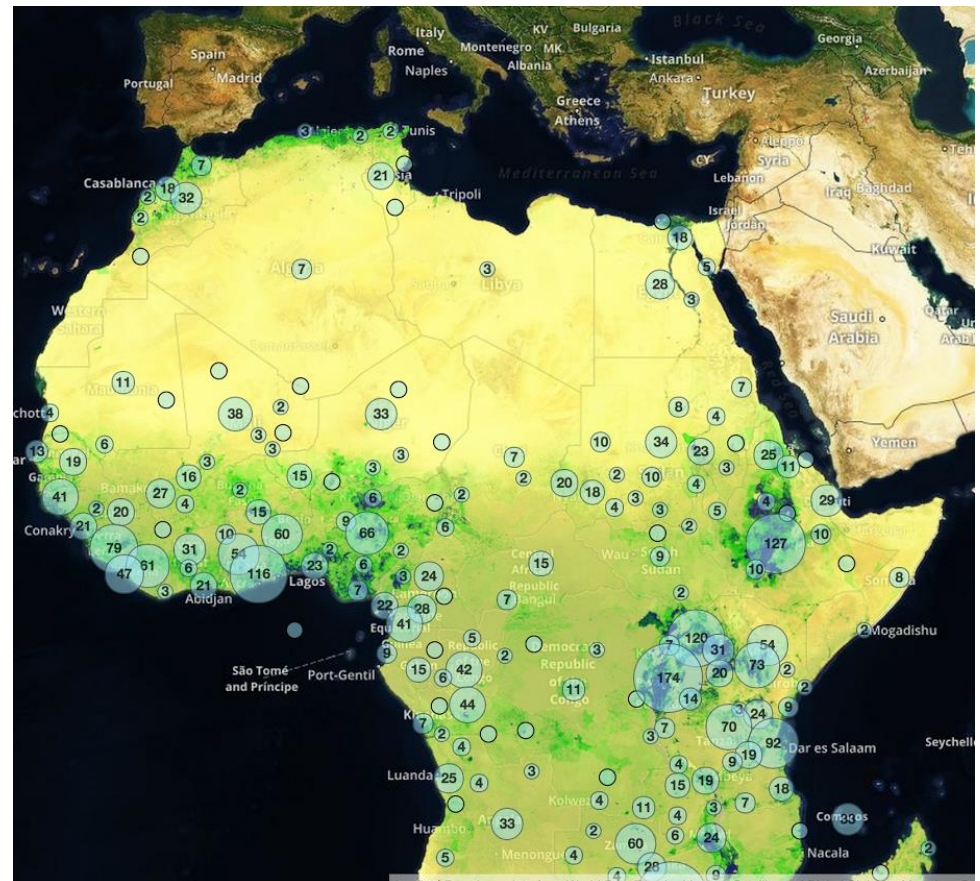


## With geocoded data, we can more effectively target aid

“This is a critical step toward being able to ask the right questions about whether aid is going to the right places and what impact it has.”

**-Simon Mizrahi,**

*Manager of the AfDB's Quality Assurance and Results Department*





U.S. GLOBAL  
DEVELOPMENT  
**LAB** Powered by **USAID**



**Building Sustainable Data Collection, Classification, and Management Systems**

# Geocoding Activities to Date via USAID Partnership

**7**

**Countries**

**~20**

**Donors per Country**

**3,132**

**Projects**

**26k+**

**Locations**

**Nepal**  
**Uganda**  
**Timor Leste**  
**Senegal**  
**Haiti**  
**Democratic Republic of Congo**  
**Honduras**

**Planned FY2015:**

**Niger**  
**Philippines**  
**Bangladesh**

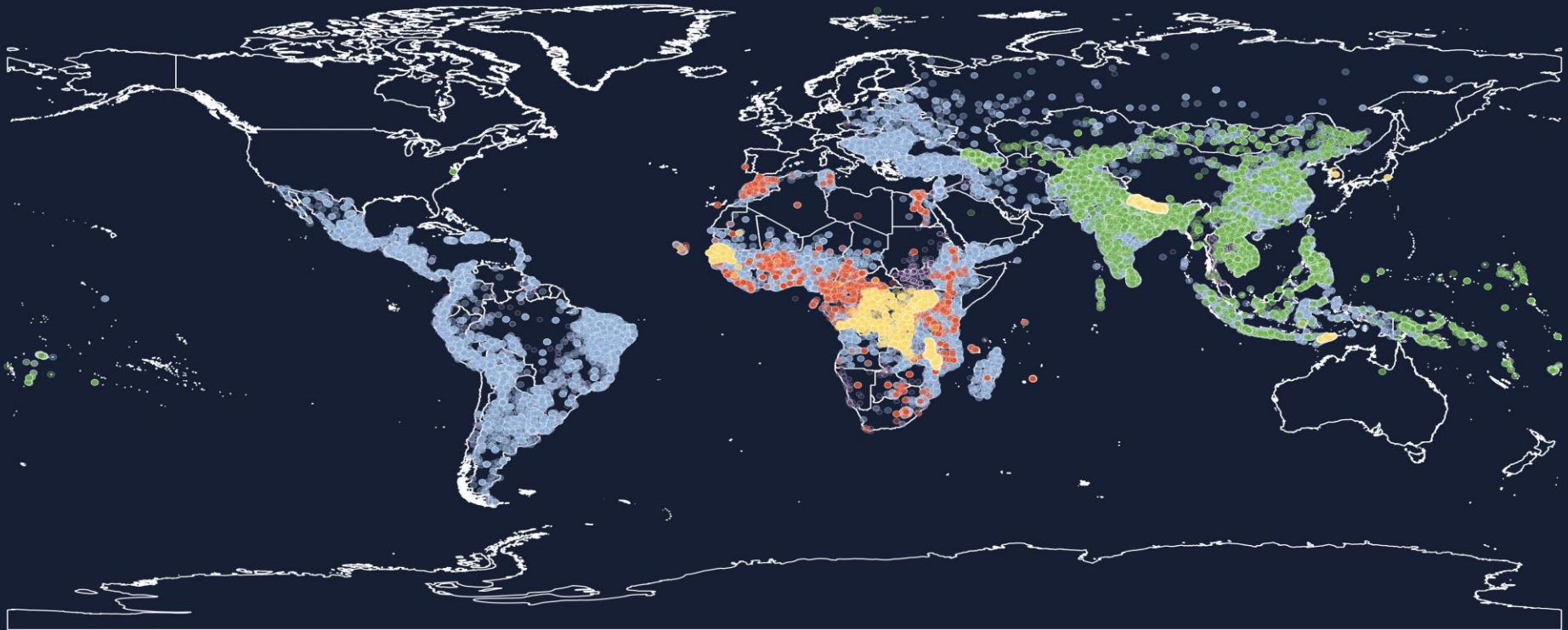






U.S. GLOBAL  
DEVELOPMENT  
**LAB** Powered by **USAID**

**AidData**  
Center for Development Policy





U.S. GLOBAL  
DEVELOPMENT  
**LAB** Powered by **USAID**



# **AidData Summer Fellows**

**Building data literacy and capacity among local organizations to use geocoded aid information to promote effective service delivery in their communities.**





U.S. GLOBAL  
DEVELOPMENT  
**LAB** Powered by **USAID**

**AidData**  
Center for Development Policy

59 AidData  
Fellows







U.S. GLOBAL  
DEVELOPMENT  
**LAB** Powered by **USAID**



# 966

development professionals  
trained







U.S. GLOBAL  
DEVELOPMENT  
**LAB** Powered by **USAID**

**AidData**  
Center for Development Policy

**AidData** BETA  
Open Data for International Development



BLOG

Search AidData

ABOUT ▾

INNOVATION ▾

MAPS

RESEARCH ▾

THE SANDBOX ▾

LOG IN

map filters ▾

map layers ▾

reset



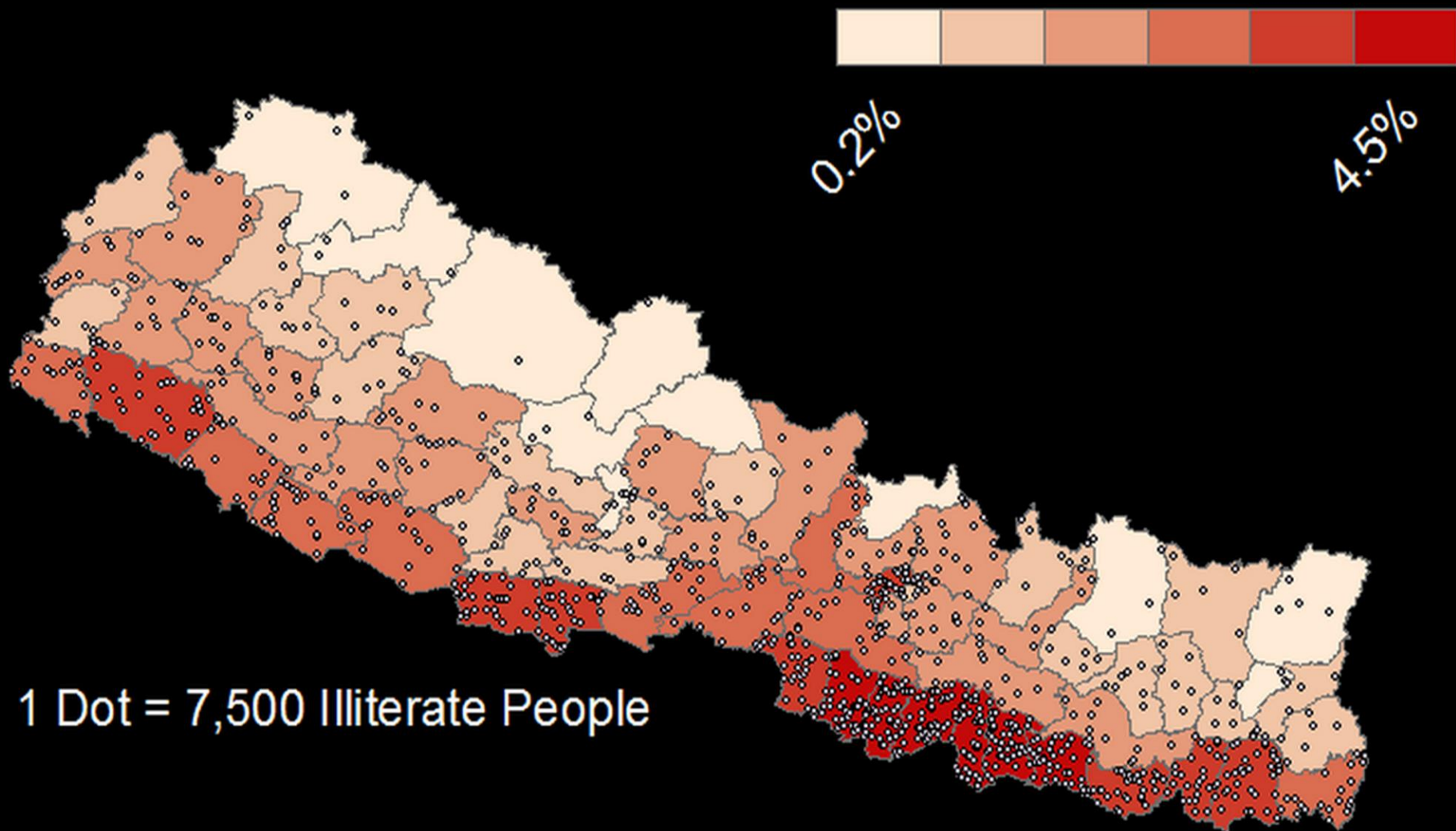
Basemaps

**Evidence Based Decision Tools**



U.S. GLOBAL  
DEVELOPMENT  
**LAB** Powered by **USAID**

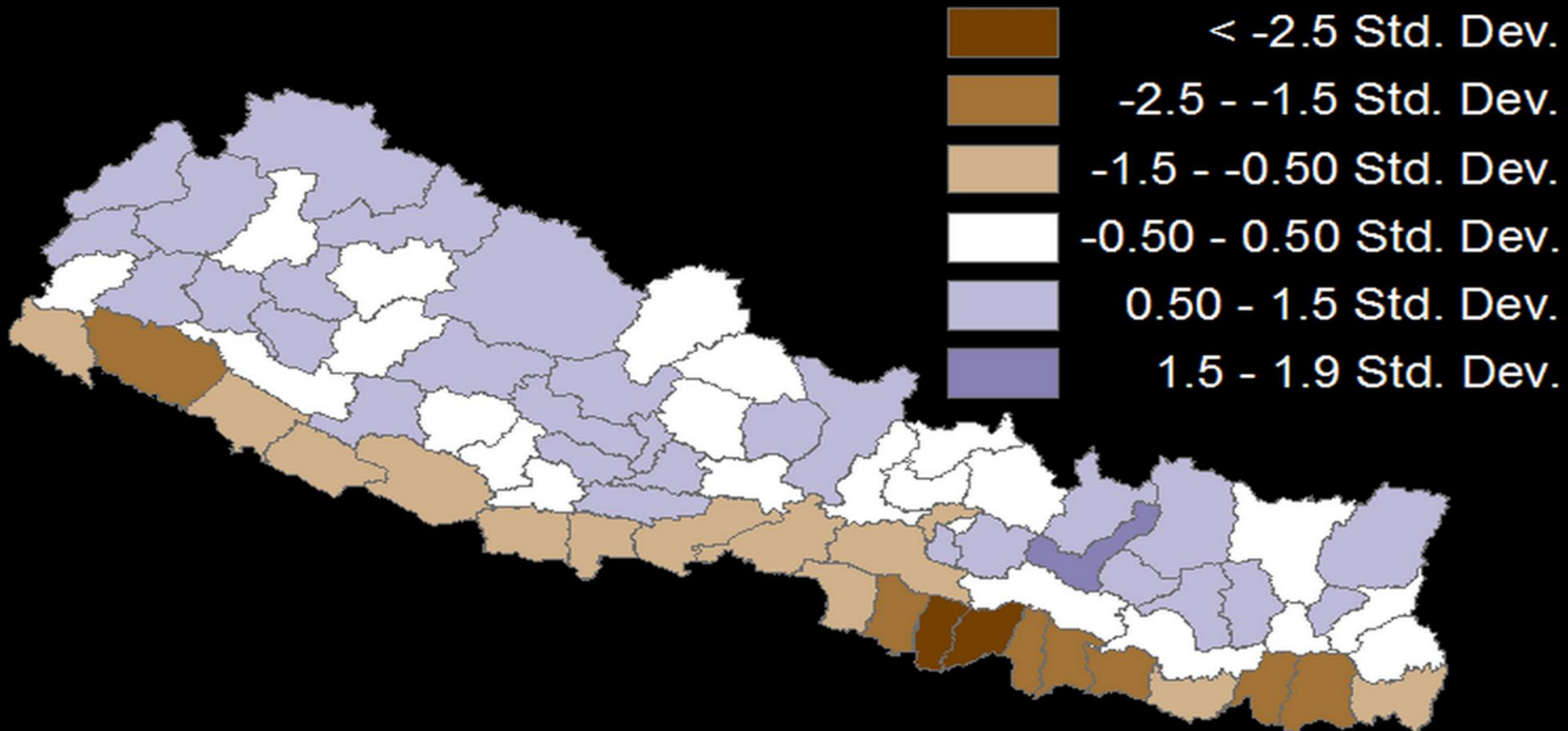
**AidData**  
Center for Development Policy







# The Difference: Proportions of Education Funding & Illiterate Persons





Layers

Satellite Damage Reports

▪ **Damaged Building**  
Damaged buildings identified using satellite imagery by the crowd-source platform Tomnod. Last updated April 29th, 2015.  
[More info](#)

**Damaged Road**

**Major Destruction**

**Tent / Shelter**

**Satellite Event Hotspots**

**NASA JPL Damage Proxy Map**

Media Damage Reports

**News Coverage**

**Youtube Coverage**

**KLL Reports**

Kathmandu Infrastructure

**Educational Facilities**

**Health Care Facilities**

Aid

**2012-2013 Aid**

OpenStreetMap

**Points**

**Places**

**Railways**

**Landuse**

**Waterways**

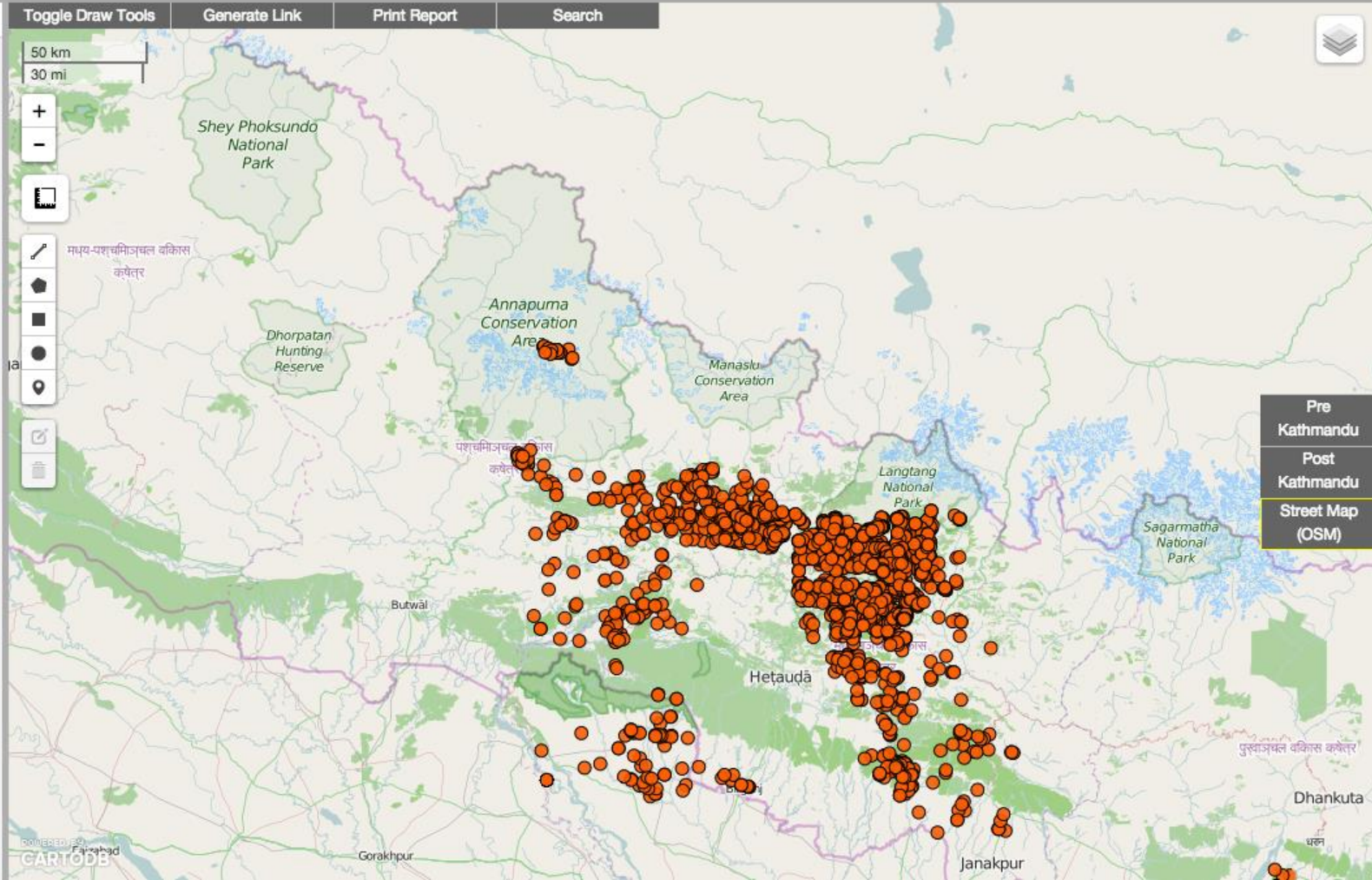
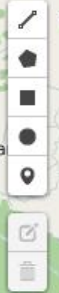
Toggle Draw Tools

Generate Link

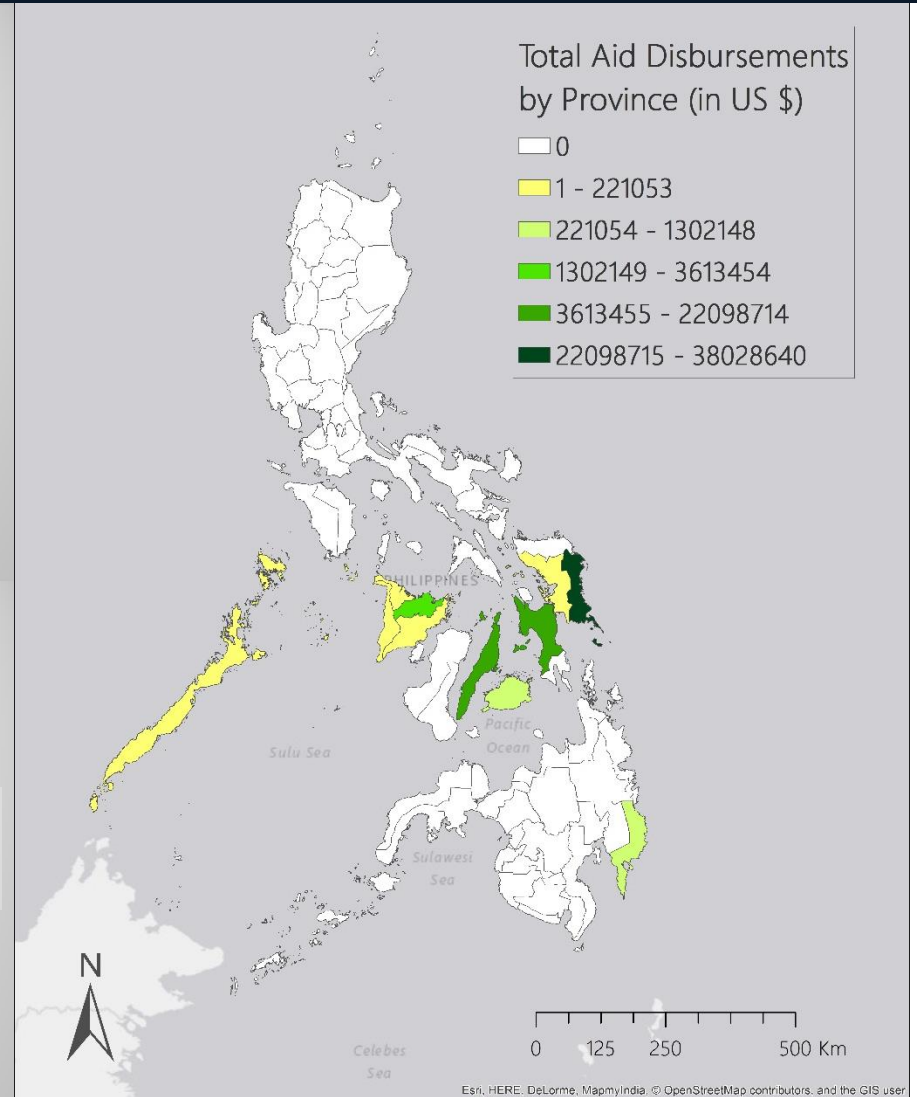
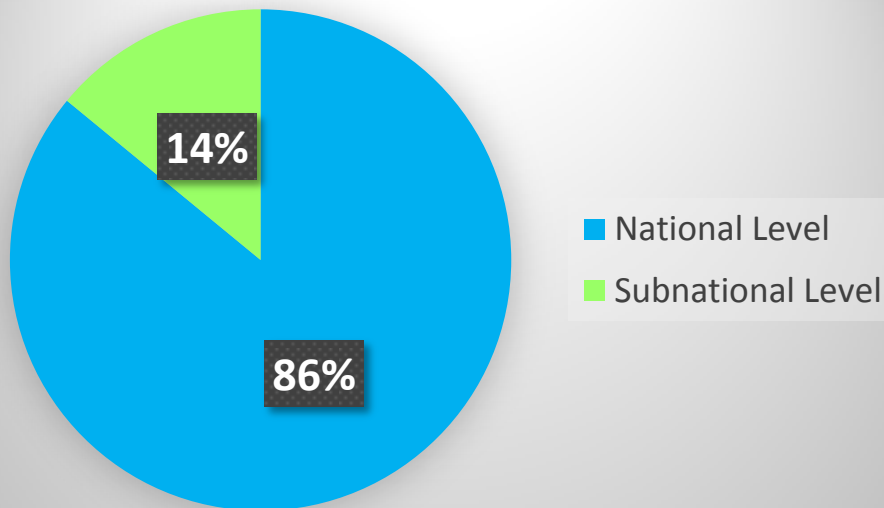
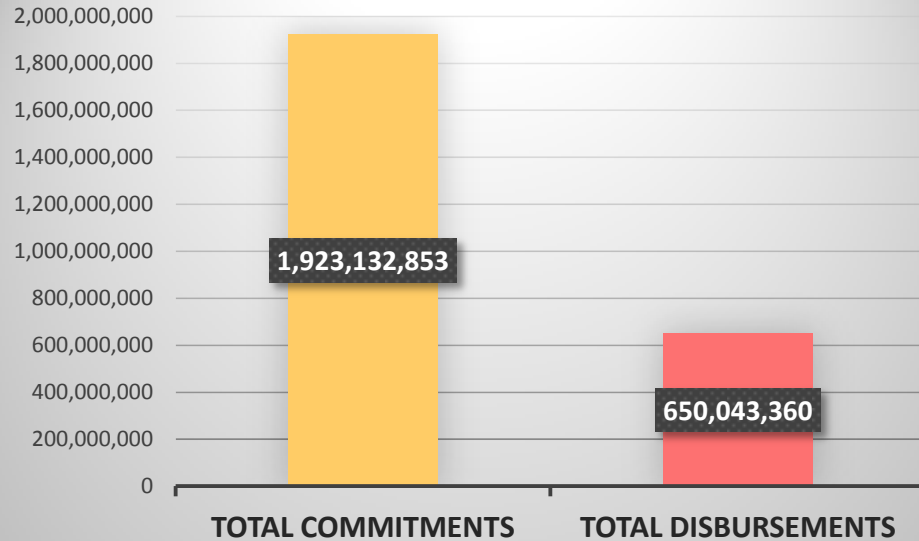
Print Report

Search

50 km  
30 mi









U.S. GLOBAL  
DEVELOPMENT  
**LAB** Powered by **USAID**



## Requesting Access to Data

**15**

Organizations

**~40**

Phone Calls

**22**

Emails

**6**

Agency  
Responses

**Only ONE Agency Offered  
Workable Data**





Interested in learning to think spatially? Contact us!

[asfphilippines15@gmail.com](mailto:asfphilippines15@gmail.com)

Or come find us after the presentation. We'd love to chat!

# AidData

Open Data for International Development

